

***Can your business be seen in China?***  
***Website visibility testing from inside China***

**25 July 2024**



Author: Peter Heather

Access to China Ltd

[webpagetest@accesstochina.com](mailto:webpagetest@accesstochina.com)

[www.accesstochina.com](http://www.accesstochina.com)



## Chinese Internet site testing tools

Release 2 (2.14)

Copyright © 2018 -2024, Access to China Ltd. All rights reserved.

Primary Authors: Peter Heather

*Testing your website in China is often seen as complex. It is not. This paper will help you understand the testing process.*

*If you need further help on the points raised, find an error, or find points not covered, please contact [webpagetest@accesstochina.com](mailto:webpagetest@accesstochina.com).*

*The information provided within this publication is for general information only. Whilst we try to keep the information up-to-date and correct, there are no representations or warranties, expressed or implied, about the completeness, accuracy, reliability, suitability or availability of the information, products, services, or related graphics contained in this publication for any purpose. Any use of this information is at your own risk.*

*No part of this publication may be reproduced or transmitted in any form or by any means, electronic or mechanical, including photocopying, recording or by any information storage and retrieval system, without written permission from the author; Access to China Ltd, [webpagetest@accesstochina.com](mailto:webpagetest@accesstochina.com)*

V2.13 Updates – 12 July 2024, V2.14 Updates – 19 July 2024 & V2.15 Updates – 25 July 2024

Subject	Report	Website
A general update of the paper	x	x

In keeping with open-source principles and Access to China policy to share information, this testing tool and supporting information to help correct issues are free to use.

This testing process was created from open-source software developed originally by ALO and enhanced by Google.

Also, as part of open-source principles, if you can make a small contribution to our ongoing work, it would be very welcome.



## Table of Contents

<b>Can your business website be seen in China?</b> .....	4
<b>Why use our internet site testing tools?</b> .....	4
<b>Test your website.</b> .....	5
<b>Make corrections</b> .....	8
<b>Re-run test</b> .....	8
<b>Reviewing your internet page test results</b> .....	9
<b>Waterfall View Report</b> .....	9
<b>Connection View</b> .....	12
<b>Reviewing your test results</b> .....	14
<b>Your Internet site cannot be seen in China.</b> .....	14
<b>The EU GDPR compliant (Cookie acceptance)</b> .....	14
<b>Poor Internet site design and coding</b> .....	14
<b>Social Media is blocked on the Chinese internet.</b> .....	14
<b>Third-party services</b> .....	14
<b>Web page test links</b> .....	14
<b>Chinese web page testing</b> .....	14
<b>Chinese web page testing results page</b> .....	15
<b>Chinese web page testing results history</b> .....	15
<b>Learn more about Chinese web page testing</b> .....	15
<b>About Access to China testing web test page</b> .....	15
<b>Log in and start testing in China</b> .....	15

## Can your business website be seen in China?

Like the rest of the world, Chinese companies and consumers are looking for products and services; the starting point is a search on the Internet.

With international social media not available in China, your website is the local source of information about your business.

Only 20% of international websites can be seen in China. The first step is to understand what parts, if any, can be seen from China; [run visibility testing in China](#).

### Why use our internet site testing tools?



Most website test tools only test to see if your business domain can be seen from mainland China using a simple “ping test”. A “ping test” is like poking your internet site to see if it exists.

A “ping test” determines only whether your website's IP address is not blocked in China. It does not explain your website's performance in China or whether parts of your content are blocked.

The testing process helps you understand which parts of your business can be seen online in China and the response times. Most international sites take over 30 seconds to load. This is due to global social media and Google site content being blocked or slowed down, leaving your website with missing components or not working.

The reports show how each part of your website's content performs. Your website's performance is measured by how the end user sees your website business.

This testing process was created from open-source software developed originally by ALO and enhanced by Google.

In keeping with open-source principles and Access to China policy to share information, this testing tool and supporting information to help correct issues are free to use.

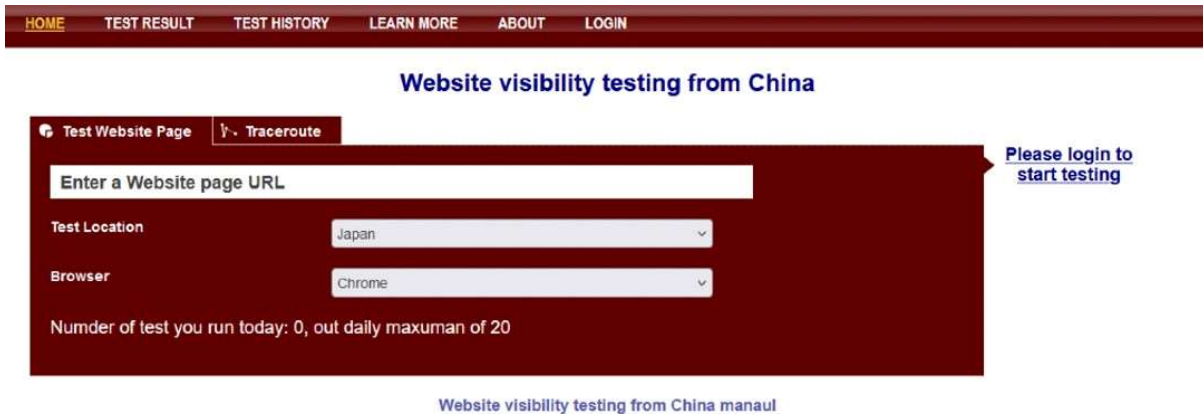


Also, as part of open-source principles, if you can make a small contribution to our ongoing work, it would be very welcome.

If you need help reviewing and correcting your internet site visibility in Chinese, please do not hesitate to get in contact. [webpagetest@accesstochina.com](mailto:webpagetest@accesstochina.com)

## Test your website.

Start testing here: <https://webtest.accesstochina.com/>



<https://webtest.accesstochina.com/>

You can run up to 20 tests per day without charge. However, your email address is limited to prevent robotic testing.

If you wish to run more than 20 tests in a day, please email [webpagetest@accesstochina.com](mailto:webpagetest@accesstochina.com)

Given the details to be reviewed during the testing process, we recommend using a tablet or PC for this website.

## Login / Register



We need your email address to enable you to access the test results and control access to the testing processes.

Your email address is only used by Access to China. If you wish us to remove your details from our database, please email us at [webpagetest@accesstochina.com](mailto:webpagetest@accesstochina.com).

We use one cookie only to deliver our services. Access to China does not keep or use any information collected using cookies. It is only present to control data between screens. We will be removing this cookie in our next system upgrade.



If you need further help on the points raised, find an error, or have questions about points not covered, do not hesitate to contact us at [webpagetest@accesstochina.com](mailto:webpagetest@accesstochina.com).

The information provided is for general informational purposes only. Whilst we try to keep the information up-to-date and correct, there are no representations or warranties, express or implied, about the completeness, accuracy, reliability, suitability or availability of the information, products, services, or related graphics contained in this publication for any purpose. Any use of this information is at your own risk.

No part of this website may be reproduced or transmitted in any form or by any means, electronic or mechanical, including photocopying, recording or by any information storage and retrieval system, without written permission from the author.

By logging into our test system, we understand that you have accepted the points above.

## The testing processes



## Start your testing

Test Website Page

Traceroute

Test Location

China

Browser

Chrome

Number of test you run today: 0, out daily maxuman of 50

START TEST

Enter the URL for the page you wish to test:

This can be www, the domain name, or the IP address.

Select the test location:

If you have not tested your web page before, we recommend that you baseline it on a location outside China. Any problem shown from outside China can be identified as an existing problem.

Select browser:

Chrome is the most widely used in China.

Press “Start Test”:

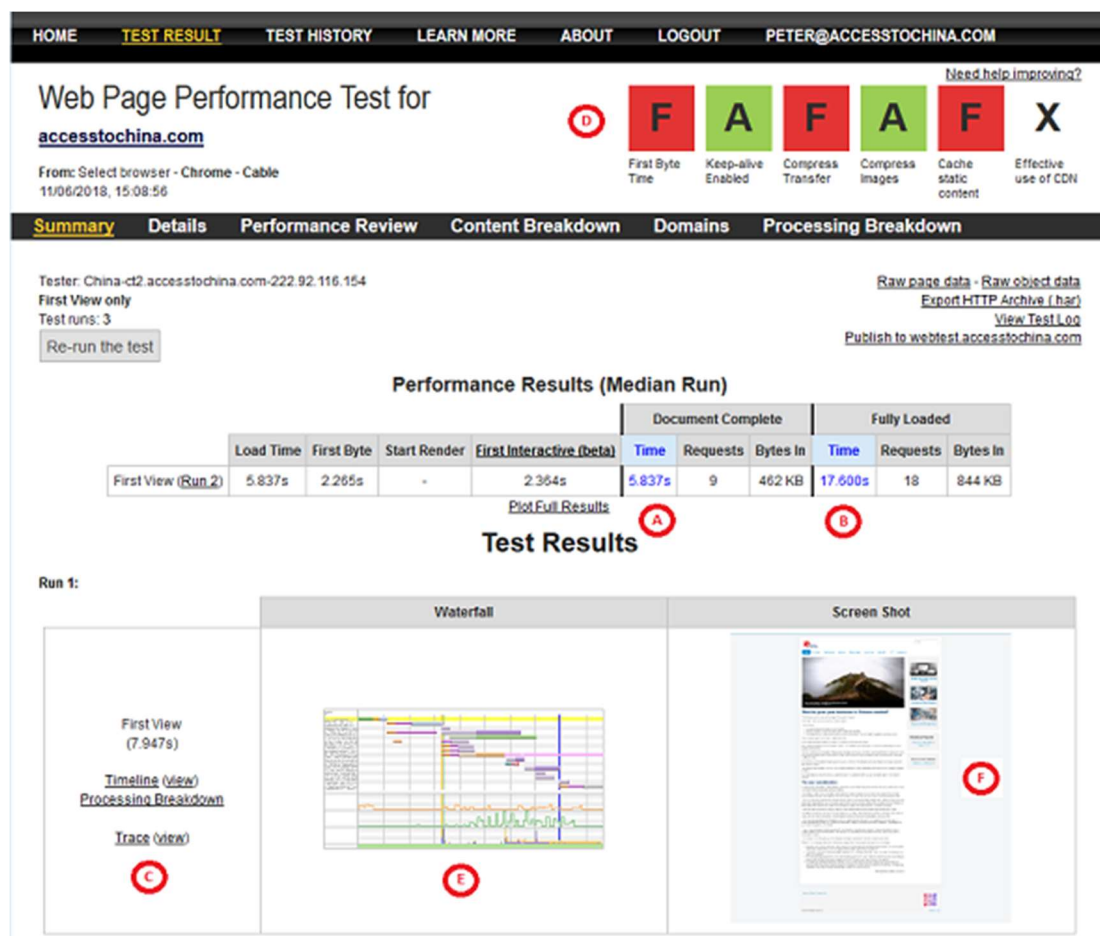
Test runs take up to 10 minutes. The tests are run three times, and the results are shown as each test is completed.

If you want to run multiple tests, return to the home page and start another once your original test has begun. The first test will remain in the queue and be processed as and when resources are available.

More than one test agent is running on each network in China, so the wait should not be too long.

## Review test results

Once the internet site page has been tested three times, you will see results like this:



- (a) The average time over three tests have been taken to show the user browser's first response.
- (b) The average time over three tests it has taken to load the entire website page.
- (c) The time it has taken to load the entire internet site page content for each test.
- (d) The website response time components are graded for each test.
- (e) Waterfall chart showing all the components of your website page and their individual response time. If you are new to Internet waterfall reports, please see <https://webtest.accesstochina.com/learnmore.php>.
- (f) An image of the website page from the test location.

## **Make corrections**

Make changes to your website when response times are slow and missing. For ideas on changes that may be required, please see <https://webtest.accesstochina.com/learnmore.php>.

## **Re-run test**

Retest website pages as required and confirm any changes have been successful.

Please test from outside China first to ensure that any changes you have made have not affected your website's general performance or content.



## Reviewing your internet page test results

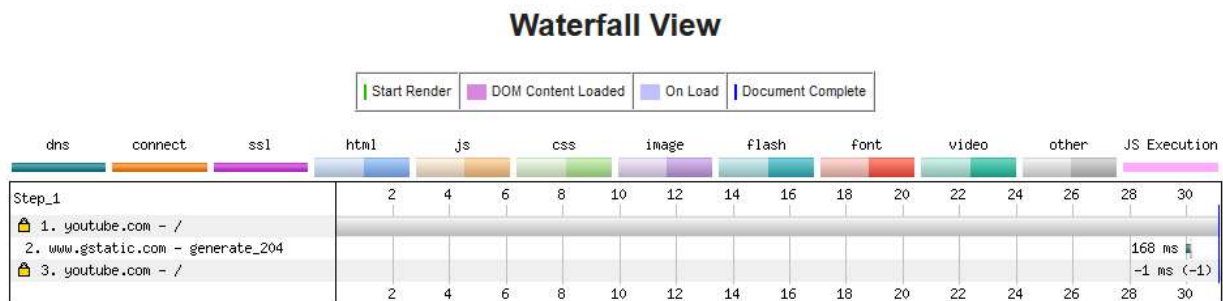
The web test page results are run three times. Each time, the local browser history is cleared. In doing so, it creates the following reports:

### Waterfall View Report

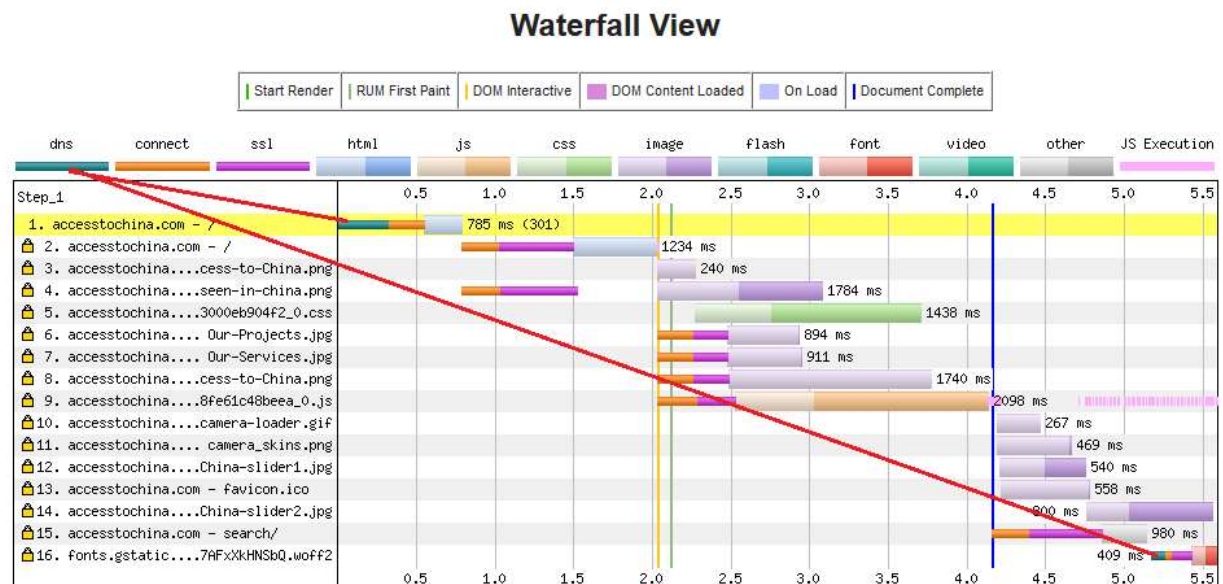
You may see the following issue from the outset;

- On the first test, you may see that your web page was not found. This often happens in China if the domain name has not been used recently. It does find the domain name on its first attempt,
- If all three tests show nothing found, the web page is blocked, or your URL was wrongly entered.

This is an example of a blocked internet site content: youtube.com

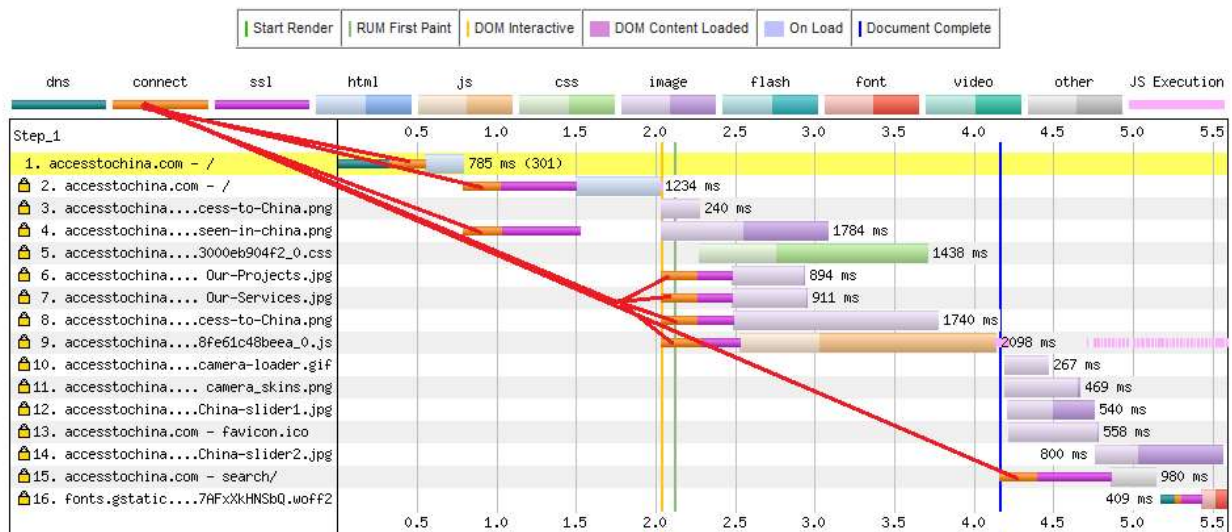


The DNS lookup is performed for each domain used in your website. This example is our web page, accesstochina.com, showing the DNS load time (green line).



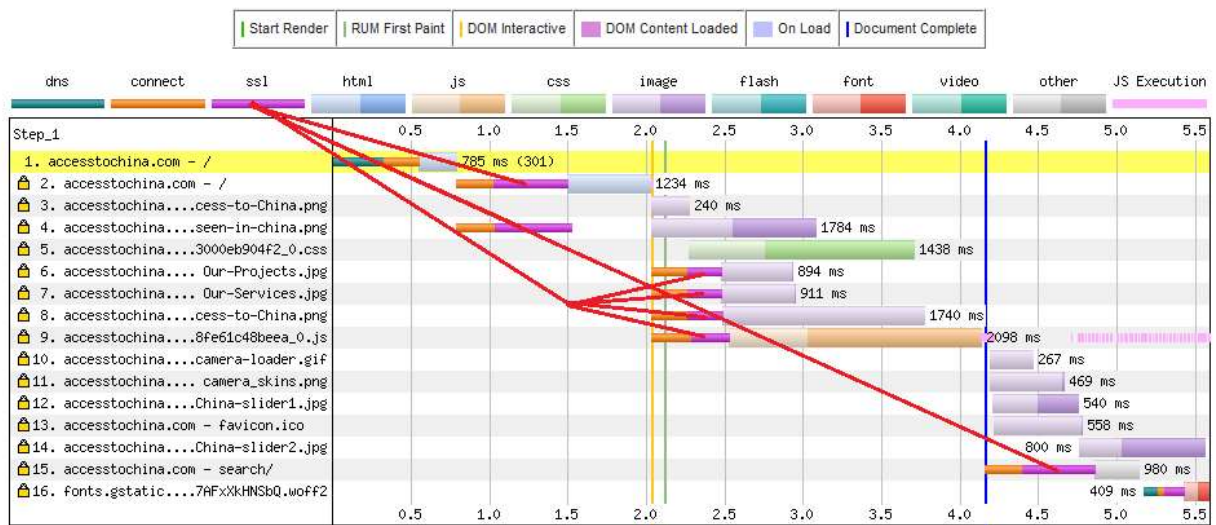
The connection time from the browser to the service is shown in orange;

## Waterfall View



If you are using an SSL certificate to secure your internet site, it will affect the response time, shown on the purple line;

## Waterfall View

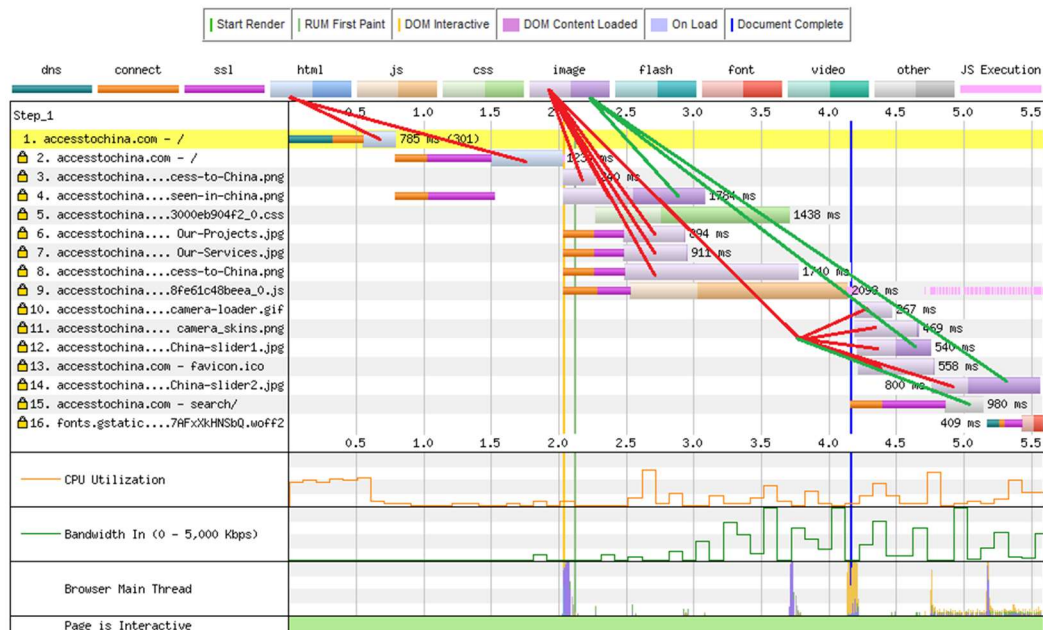


The waterfall report shows and reports each web page element. The lighter colours for each component indicate the time it takes to load the first data byte. The end of the line, in a darker colour, means the time it has taken to load the element into the browser.



Here is an example showing the HTML elements

## Waterfall View



The overall response time is measured from the start to fully loaded when all the data on your web page has been collected.

The “Start Render” is where the browser starts displaying information.

The Document Complete is when the browser has displayed the full page of your website. This can be misleading if you display a “Cookie” message or a script running in the background. This type of message often locks up a webpage until it is Fully Loaded.

If you have this problem on your website, the user will often "click" on some of your website's pages and, in doing so, lock your website. This is why remote testing of your website is so important.

## Waterfall View



## Connection View

This shows the connection between the browser and the server. The slower the response time, the more connections are reviewed.

This connection view is accessible from a browser in China to a server in the UK.

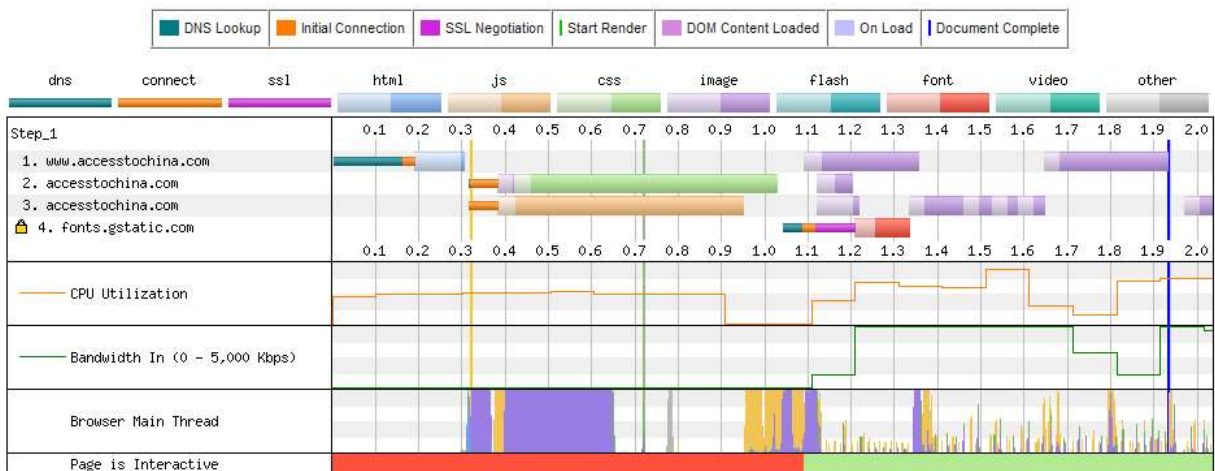
## Connection View



This connection view is accesstochina.com from browser UK to server UK.



## Connection View



## Request detail Report

The request detail report summarises the status codes the browser receives when trying to access your internet site. For example, Google Captcha is accessible from China. Below is a list of status codes for your reference.

## Request Details

Request Details												
#	Resource	Content Type	Request Start	DNS Lookup	Initial Connection	SSL Negotiation	Time to First Byte	Content Download	Bytes Downloaded	Certificates	Error/Status Code	IP
1	http://oap.comodoca_CSzQAQ/FBzABAQ%3D%3D	application/oap-response	0.866 s	84 ms	69 ms	-	75 ms	-	-	-	200	-
2	https://www. [redacted] .ted/product-createsales	text/html	0.944 s	87 ms	296 ms	557 ms	736 ms	46 ms	6.8 KB	-	200	104.20.173.44
3	https://www. [redacted] .s/app-cf4de7da9.ca	text/css	1.691 s	-	-	-	350 ms	612 ms	75.6 KB	-	200	104.20.173.44
4	https://www. [redacted] .8a98cb43b805180.ca	text/css	1.691 s	-	-	-	1013 ms	-	4.5 KB	-	200	104.20.173.44
5	https://www. [redacted] .xQnnnIGAvEBDbYbaP2h7	text/css	1.691 s	-	-	-	969 ms	-	0.4 KB	-	200	104.20.173.44
6	https://www. [redacted] .s/css/clientarea.ca	text/css	1.692 s	-	-	-	975 ms	38 ms	15.9 KB	-	200	104.20.173.44
7	https://www. [redacted] .web/img/ue-top.png	image/png	1.692 s	-	-	-	309 ms	-	1.5 KB	-	200	104.20.173.44
8	https://www. [redacted] .assets/img/logo.png	image/png	1.692 s	-	-	-	642 ms	9 ms	3.3 KB	-	200	104.20.173.44
9	https://www. [redacted] .assets/img/logo.svg	image/svg+xml	1.692 s	-	-	-	330 ms	4 ms	2.4 KB	-	200	104.20.173.44
10	https://www.google.captcha/api.js?hl=en	-	1.695 s	-	-	-	1265 ms	-	-	-	-1	-
11	https://www. [redacted] .img/unia-left.svg	image/svg+xml	1.708 s	-	-	-	301 ms	11 ms	2.8 KB	-	200	104.20.173.44
12	https://www. [redacted] .js/clickboard.min.js	application/javascript	1.711 s	-	-	-	1538 ms	-	3.3 KB	-	200	104.20.173.44

CODE	INDICATION
2xx	Success
200	OK, the request was fulfilled.
201	OK, following a POST command.
202	OK; accepted for processing, but processing is not completed.
203	OK; partial information--the returned information is only partial.
204	OK; no response. The request was received, but there was no information to send back.
3xx	Redirection
301	Moved--the data requested has a new location, and the change is permanent.
302	Found- the data requested has a temporary URL.
303	Method--Under discussion, a suggestion is for the client to try another location.
304	Not Modified--The document has not been modified as expected.
4xx	The error seems to be in the client.
400	Bad request--syntax problem in the request, or it could not be satisfied.

401	Unauthorised--the client is not authorised to access data.
402	Payment required--indicates a charging scheme is in effect.
403	Forbidden access is not required even with authorisation.
404	Not found--server could not find the given resource.
5xx	<b>The error seems to be in the server.</b>
500	Internal Error--The server could not fulfil the request because of an unexpected condition.
501	Not implemented--the server does not support the facility requested.
502	The server was overloaded, and the high load (or servicing) was in progress.
503	Gateway timeout- The server waited for another service not completed in time.
-1	This denotes an aborted/timed-out request (either the server is down, the client is not connected to the internet, or the request was manually cancelled by the client)—this is often the status when Chinese internet is blocking internet site content.

## Request Header Report

A list of all the files required to display your website page.

### Request Headers

[+ Expand All](#)

- + Request 1: <http://www.accesstochina.com/>
- + Request 2: <https://www.accesstochina.com/>
- + Request 3: [https://accesstochina.com/media/plg\\_jchoptimize/cache/css/6dc239ff6655fc7ac2755f5552bc8133\\_0.css](https://accesstochina.com/media/plg_jchoptimize/cache/css/6dc239ff6655fc7ac2755f5552bc8133_0.css)
- + Request 4: <https://accesstochina.com/images/Access-to-China.png>
- + Request 5: [https://accesstochina.com/media/plg\\_jchoptimize/cache/js/22d06b1206aa89a1ba7f395f197d57af\\_0.js](https://accesstochina.com/media/plg_jchoptimize/cache/js/22d06b1206aa89a1ba7f395f197d57af_0.js)
- + Request 6: [https://accesstochina.com/modules/mod\\_slideshowck/themes/default/images/camera-loader.gif](https://accesstochina.com/modules/mod_slideshowck/themes/default/images/camera-loader.gif)
- + Request 7: [https://accesstochina.com/modules/mod\\_slideshowck/themes/default/images/camera\\_skins.png](https://accesstochina.com/modules/mod_slideshowck/themes/default/images/camera_skins.png)
- + Request 8: <https://www.accesstochina.com/images/home-slider/China-slider1.jpg>
- + Request 9: <https://accesstochina.com/templates/protostar/favicon.ico>
- + Request 10: <https://accesstochina.com/images/rtlogoshowcase/being-seen-in-china.png>
- + Request 11: <https://accesstochina.com/images/rtlogoshowcase/Our-Projects.jpg>
- + Request 12: <https://accesstochina.com/images/rtlogoshowcase/Our-Services.jpg>
- + Request 13: <https://accesstochina.com/images/qrcodes/Access-to-China.png>
- + Request 14: <https://www.accesstochina.com/index.php/component/search/?Itemid=101&format=opensearch>
- + Request 15: <https://www.accesstochina.com/images/home-slider/China-slider2.jpg>
- + Request 16: <https://fonts.gstatic.com/s/droidsans/v8/SIGVmQWMvZQldix7AFxXkHNsbQ.woff2>

## Reviewing your test results

### Web page test links

#### Chinese web page testing

<https://webtest.accesstochina.com/>

Title	Chinese website performance free testing service
Description	Run a free Chinese website speed test worldwide using real browsers at consumer connection speeds with detailed optimisation recommendations.



## Chinese web page testing results page

<https://webtest.accesstochina.com/result/-> test results code does here -

Title	Chinese website Test Results
Description	Chinese Website Performance Test Result

## Chinese web page testing results history

[https://webtest.accesstochina.com/test\\_results\\_display.php](https://webtest.accesstochina.com/test_results_display.php)

Title	Web page performance analysis for China
Description	Speed up the performance of your web pages in China with an automated analysis.

## Learn more about Chinese web page testing.

<https://webtest.accesstochina.com/learnmore.php>

Title	Learn more about web page performance analysis for China.
Description	Learn more about how you can speed up the performance of your web pages in China with an automated analysis.

## About Access to China testing web test page

<https://webtest.accesstochina.com/about.php>

Title	About Access to China Testing Service
Description	How can you test your website pages from China? How does your web page perform from mainland China?

## Log in and start testing in China

Title	Start your Chinese website performance testing.
Description	Register and log in to start testing your company website in China.